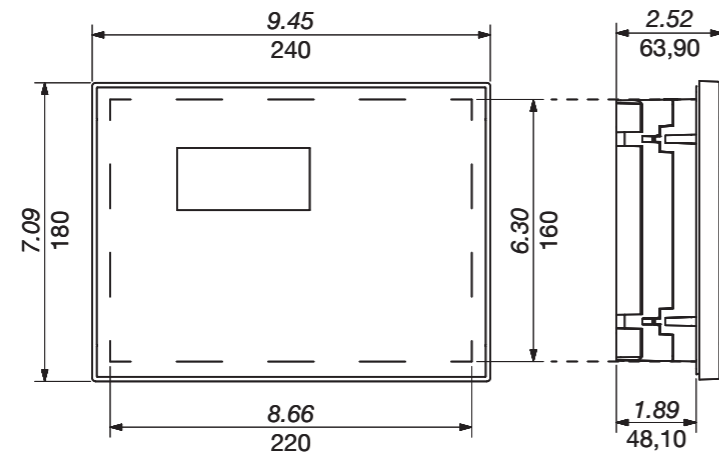


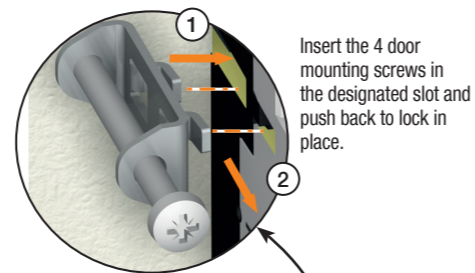
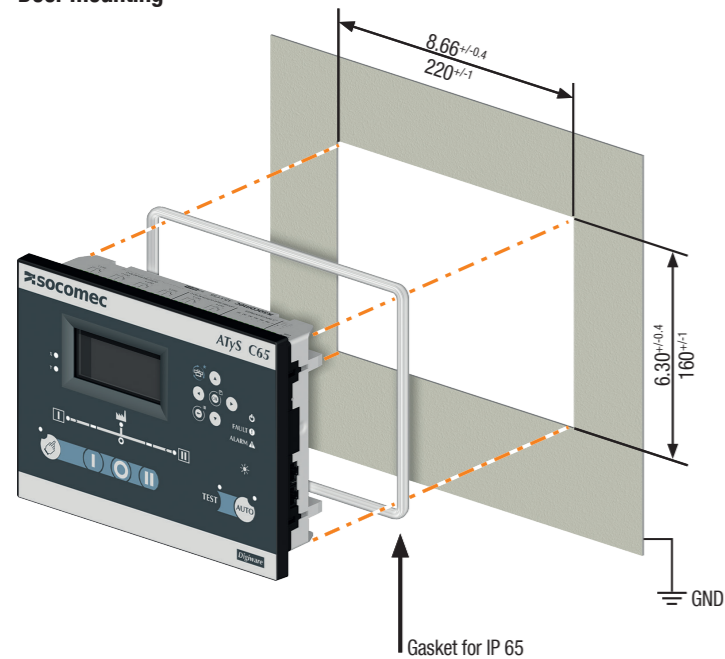
STEP 1A Product dimensions

Dual Dimensions
in/mm

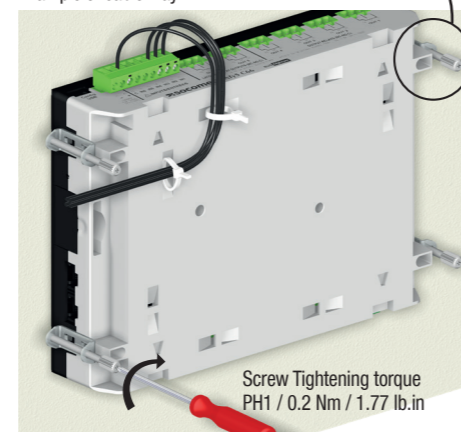


STEP 1B Mounting & connecting controller

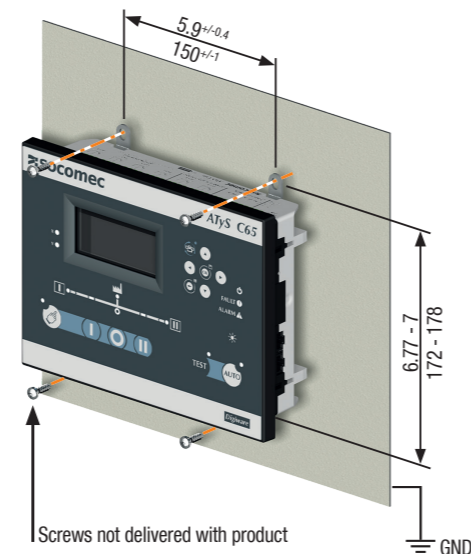
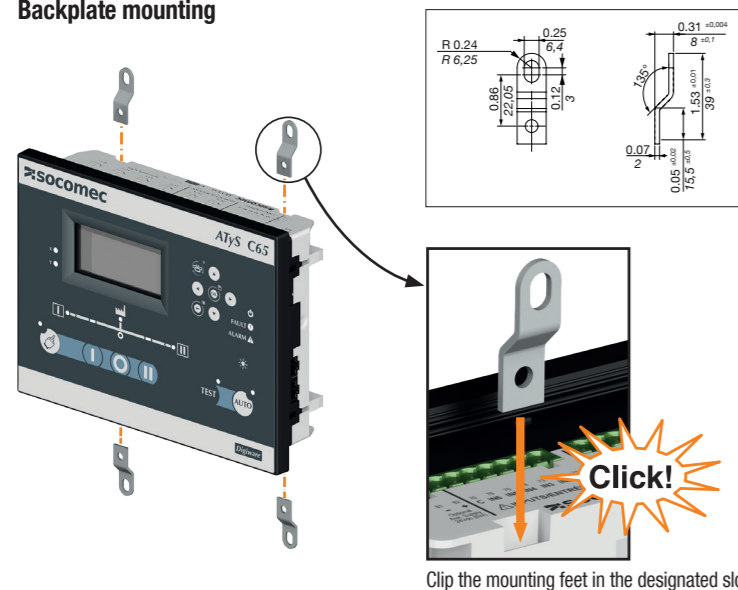
Door mounting



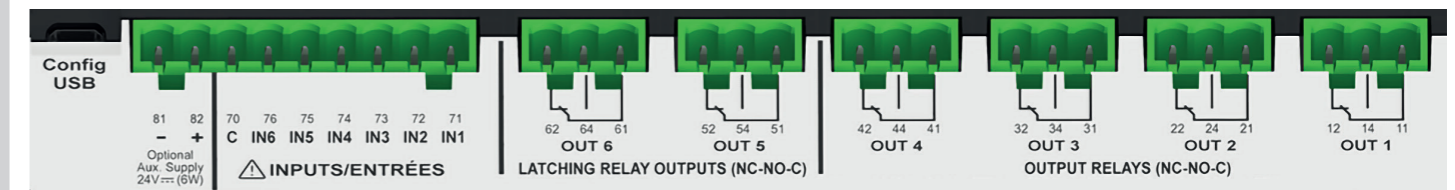
Example of cable way.



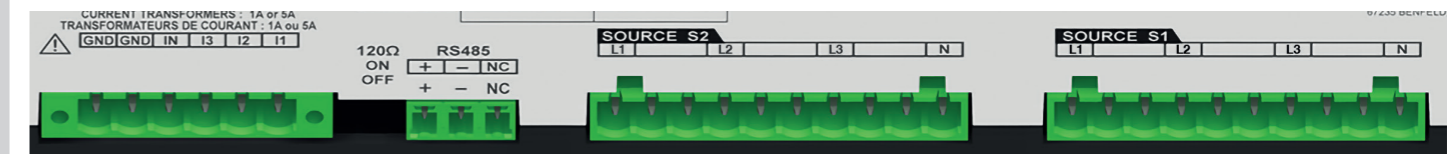
Backplate mounting



STEP 2 Controller wiring



Top view

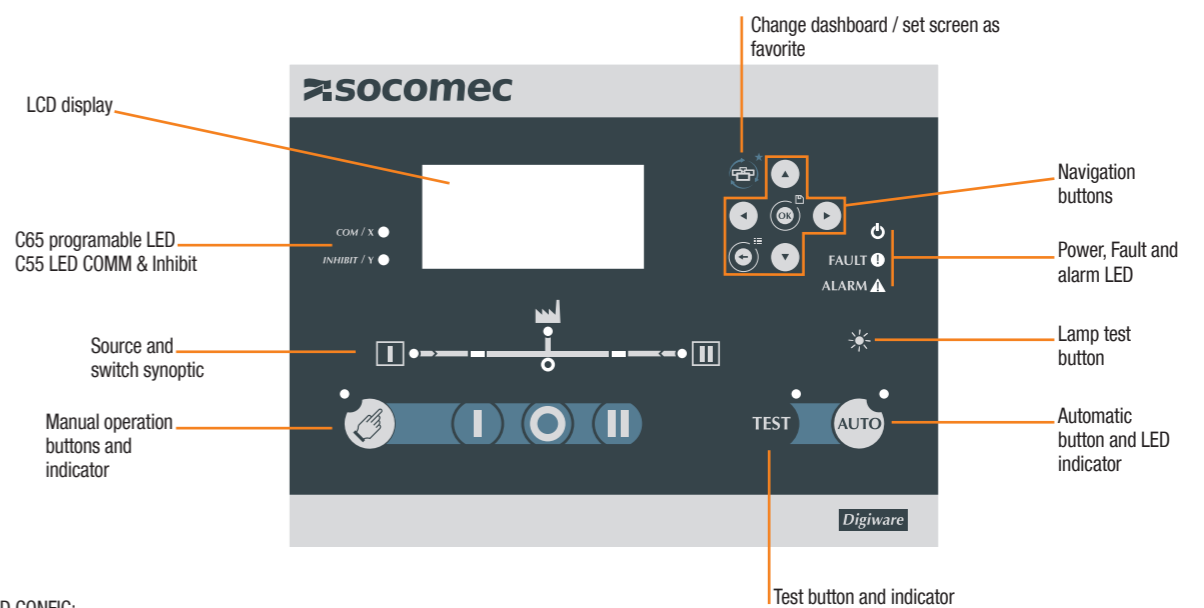


Bottom view

TYPE	TERMINAL N°	DESCRIPTION	CHARACTERISTICS	RECOMENDED CROSS SECTION
Inputs	71	IN1: programmable input	Do not connect to any power supply from terminal 70 common point.	1.5-2.5mm ² AWG 16-14 Tightening torque 0.5-0.6 Nm 4.4-5.3 Lb.in
	72	IN2: programmable input		
	73	IN3: programmable input		
	74	IN4: programmable input		
	75	IN5: programmable input		
	76	IN6: programmable input		
	70	Common point for inputs		
Aux power supply	81/82	-: negative terminal for aux supply +: positive terminal of aux supply	12-24 Vd.c.	
Outputs	12/14/11	OUT1: reserved (switch ODR1)	Dry contacts 8A / 277 VAC 50/60 Hz 5A / 24 VDC	
	22/24/21	OUT2: reserved (switch ODR2)		
	32/34/31	OUT3: programmable output		
	42/44/41	OUT4: programmable output		
Latching relays	52/54/51	OUT 5: programmable latching relay		
	62/64/61	OUT 6: genset start relay		
Current transformers	IN13/12/11	CT neutral / CT phase C / CT phase B / CT phase A	CT input 1A or 5A	
Serial connection	RS485	Connection RS485 -: negative terminal of RS485 bus +: positive terminal of RS485 bus NC: Ground	RS485 bus insulated	LYCY shielded twisted pair 0.14 to 1.5 mm ² / 30-14 AWG Tightening torque 0.22 - 0.25 Nm 1.9-2.2 Lb.in
Digiware*	DIGIBUS	Connection point for I/O 10 optional accessories (must use 24 VDC input)	RJ 45 digiware cable	

* For more information check I/O module instruction sheet ref 545597

STEP 3 Configuration



SMART WIZARD CONFIG:

When powered for the first time the controller will prompt the user to configure using the wizard. To access the wizard input code 1000 then the configuration will go as follow:



For advanced configuration go to parameters menu.