

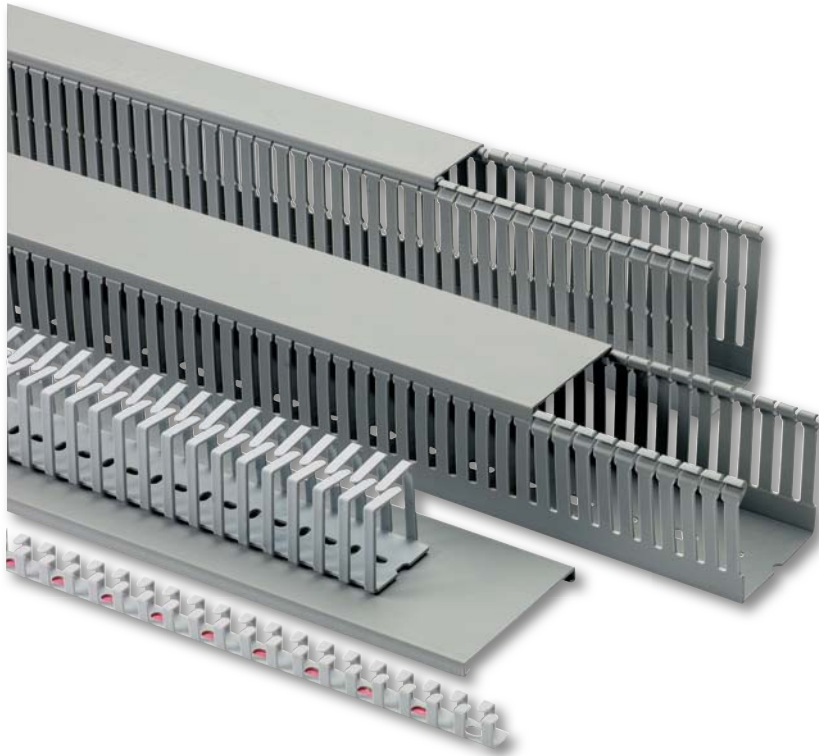


Cable trunking

Mounting accessories

Enclosures
& accessories

goulo_029_en_1_cat



The solution for

- > Power distribution



Strong points

- > Easy to install
- > Electrical safety
- > 3 models available

Conformity to standards

- > IEC 61439-1
- > NF C 68-102
- > DIN 43659



Function

SOCOMECCable trunking are designed for conducting, fixing and protecting cables.

Advantages

Easy to install

- High mechanical resistance. Can be mounted without base support. Fixing distance of 600 mm.
- Clean break tabs.
- Suitable for flexible cables up to 1x10 mm² in 12x8 cable trunks.
- Pre-cut in the lower part: optimised inspection tee.

Electrical safety

- Self-extinguishable PVC class 1 (UL94-V0).
- Incandescent wire self-extinguishable at 960 °C.
- Dielectric constant 3.4 kV.
- Dielectric strength 250 kV/cm.

3 models available

- Rigid trunking (grey RAL 7030),
 - 25 dimensions from 15 x 17 to 200 x 100 mm.
 - 2 slot widths: 8 mm and 12 mm strips, 4 mm and 6 mm strips,
 - lockable cover,
- Flexible adhesive cable trunk (grey colour RAL 7035):
 - 4 dimensions from 13 x 15 to 40 x 44 mm,
 - 1 slot width: 6 mm.
- Halogen-free trunking:
 - to limit scrapped material, the trunking consists in 2000 mm clampable sections.
 - It is injection moulded to ensure a better finishing than products manufactured via extrusion processes.
 - Material: PPO-Noryl class 2.
 - Colour: grey RAL7035.
 - Resistance: - 25 to + 85 °C.

References

Flexible conduit trunking

W x H x L (mm)	Internal cross-section (mm ²)	To be ordered in multiples of	Reference
13 x 15 x 500	120	50	5715 1315
20 x 24 x 500	360	50	5715 2024
29 x 33 x 500	780	50	5715 2933
40 x 44 x 500	1510	50	5715 4044

Rigid trunking

W x H x L (mm)	Internal cross-section (mm ²)	Pack ⁽¹⁾	8 mm slot Reference	4 mm slot Reference
25 x 40 x 2000	760	60		5712 2540
40 x 40 x 2000	1 310	40		5712 4040
60 x 40 x 2000	1 960	28		5712 6040
80 x 40 x 2000	2 655	24		5712 8040
25 x 60 x 2000	1 200	40		5712 2560
40 x 60 x 2000	1 960	36		5712 4060
60 x 60 x 2000	3 080	24		5712 6060
80 x 60 x 2000	4 175	24		5712 8060
100 x 60 x 2000	5 295	20		5712 9060
120 x 60 x 2000	6 390	16		5712 9260 ⁽²⁾
25 x 80 x 2000	1 540	32		5712 2580
40 x 80 x 2000	2 680	24		5712 4080
60 x 80 x 2000	4 200	24		5712 6080
80 x 80 x 2000	5 695	16		5712 8080
100 x 80 x 2000	7 215	16		5712 9080
120 x 80 x 2000	8 710	12		5712 9280 ⁽²⁾
40 x 100 x 2000	3 350	16	5711 4090	
60 x 100 x 2000	5 320	16	5711 6090	
80 x 100 x 2000	7 215	16	5711 8090 ⁽²⁾	
100 x 100 x 2000	9 135	16	5711 9090 ⁽²⁾	
150 x 100 x 2000	13 670	8	5711 9590 ⁽²⁾	
200 x 100 x 2000	18 370	8	5711 9990 ⁽²⁾	

(1) Rigid trunking are delivered with covers.

(2) Grooved ducts.

Rigid halogen-free trunking

W x H x L (mm)	Internal cross-section (mm ²)	Pack ⁽¹⁾	Reference
25 x 25 x 2000	440	84	5719 2525
25 x 37.5 x 2000	770	64	5719 2537
25 x 50 x 2000	1030	52	5719 2550
37.5 x 37.5 x 2000	1220	32	5719 3737
37.5 x 50 x 2000	1640	48	5719 3750
37.5 x 75 x 2000	2400	32	5719 3775
50 x 50 x 2000	2100	24	5719 5050
50 x 75 x 2000	3250	24	5719 5075
75 x 50 x 2000	3200	24	5719 7550
75 x 75 x 2000	4800	16	5719 7575
100 x 50 x 2000	4400	16	5719 9050
100 x 75 x 2000	6700	16	5719 9075
125 x 75 x 2000	7000	12	5719 9275

(1) Rigid trunking are delivered with covers.

Cable trunking

Mounting accessories

Accessories

Cable ties

Use

For maintaining the cables into the trunk.

Width (mm)	To be ordered in multiples of	Reference
40 ... 120	400	5719 0714



goulo_008_a_1_cat

Covers

Use

For closing the trunk and maintaining the cables.

Width (mm)	Length (mm)	To be ordered in multiples of	For rigid trunk Reference	For halogen-free trunk Reference
25	2 000	1	5713 0025	5713 1025
37.5	2 000	1		5713 1037
40	2 000	1	5713 0040	
50	2 000	1		5713 1050
60	2 000	1	5713 0060	
75	2 000	1		5713 1075
80	2 000	1	5713 0080	
100	2 000	1	5713 0100	5713 1100
120	2 000	1	5713 0120	
125	2 000	1		5713 1125
150	2 000	1	5713 0150	
200	2 000	1	5713 0200	



goulo_031_a_1_cat

Rapid cable sheath

Use

Flexible sheath that maintains cables into ducts.

Characteristics

Rapid and easy operations to add or remove cables using a specific tool.

Diameter (mm)	To be ordered in multiples of	Reference
8	100 m	5716 0800
15	50 m	5716 1500
20	30 m	5716 2000
25	20 m	5716 2500



goulo_021_a_1_cat

Tool for rapid sheath		
Diameter (mm)	To be ordered in multiples of	Reference
8	1	5716 0810
15	1	5716 1510
20	1	5716 2010
25	1	5716 2510



goulo_020_a_1_cat

Spiral cable tidy

Use

Flexible sheath that maintains cables into ducts.

Diameter (mm)	Band width (mm)	To be ordered in multiples of	Reference
3	5	50 m	5716 0003
6	8	25 m	5716 0006
12	12	25 m	5716 0012



goulo_011_a_1_cat

Cable rivets

Use

Ensures the fixing of trunking systems onto the perforated supports.

A dedicated tool facilitates the installation of rivets.

Diameter (mm)	To be ordered in multiples of	Reference
4.5	200	5719 0204
6.5	200	5719 0206
6.5 mm rivet dedicated tool (black)	1	5719 0421
4.5 mm rivet dedicated tool (green)	1	5719 0422



access_273_a

Label holder

Use

- For rigid trunk.
- Enables the identification of devices in the control cabinet.

Type	To be ordered in multiples of	Reference
Label holder	250	5719 0610



goulo_014_a_1_cat

Support

Use

Ensures the fixing of trunking systems onto symmetrical and asymmetrical DIN-rails.

Type	To be ordered in multiples of	Reference
Support	100	5719 0010

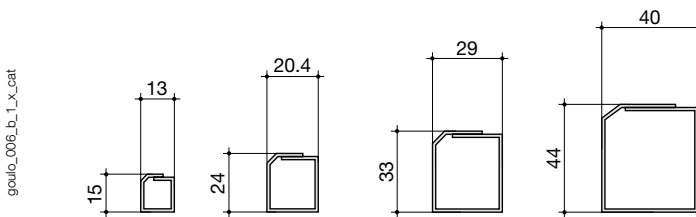


goulo_016_a_1_cat

Dimensions

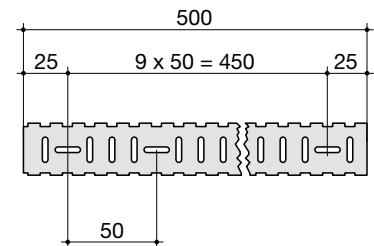
Flexible conduit trunking

Cross-section



goulo_006_b_1_x_cat

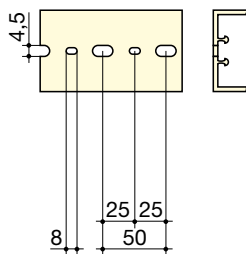
Back perforation



goulo_007_c_1_x_cat

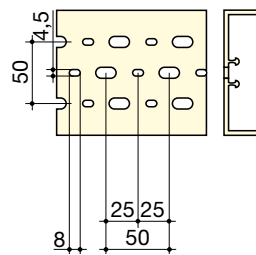
Rigid trunking

Back perforation



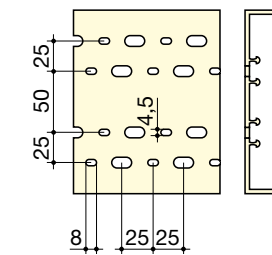
Widths 15/25/40/60 mm

goulo_005_a_1_x_cat



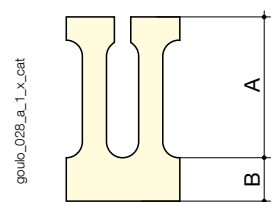
Widths 80/100 mm

goulo_027_a_1_x_cat



Widths 120/150 mm

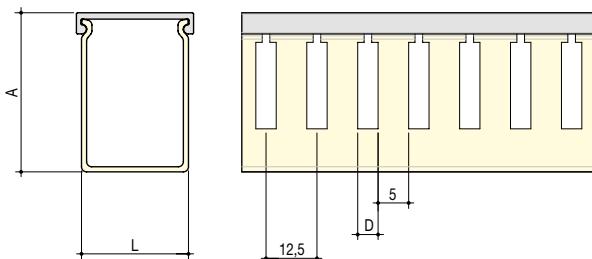
Side cutout



goulo_028_a_1_x_cat

goulo_004_a_1_x_cat

Rigid halogen-free trunking



goulo_033_a_1_x_cat

4 mm slot			8 mm slot		
Height (mm)	A	B	Height (mm)	A	B
17	6	4	17	6	4
40	18	12	40	18	12
60	40	11	60	40	11
80	52	16	80	52	16