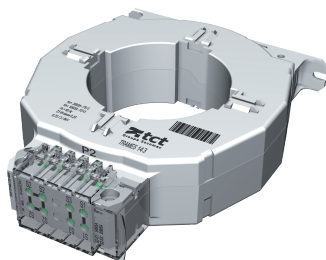


## TRAMES144

## TRAMES144



### Strong points

- High measuring accuracy
- Large choice of dimensions
- Multi-ratings
- Easy to install
- Easy to wire and secure

### General characteristics

- High measuring accuracy
- Wide choice of dimensions
- Multiple ratings
- Easy to install
- Easy to connect and secure

### Compliance with standards

- IEC 61869-2

### Link to the reference

Current transformers deliver to the secondary unit a standard current proportional to the primary current and adapted to the rating of the associated energy meter. They are equipped as standard with removable terminal shrouds and double terminals to short-circuit the secondary unit without risk.

They are fixed by two metal legs to be screwed, or some clip on to a DIN rail.

Connections are screws or fast-on lugs.

### ----- System -----

Fill rate E-Order Common	33
--------------------------	----

### Classification

UNSPSC	39121032
ETIM Class	EC002048
IGCC	4186

### Commerce

Effective date	2015-02-23
Obsolescence date	2020-09-10
Production ban date	2021-03-01
Country of origin	FR
Discount Policy	1EA10
Discount Policy Label	CURRENT TRANSFORMER

### ETIM - Technical features

Model	Through-feed current converter
-------	--------------------------------

### Logistics

GTIN/EAN	3596032931858
Customs number	8504318090
Price unit	PC
Weight of the packing unit	0.899
Length of the packing unit	0.07
Width of the packing unit	0.24
Depth of the packing unit	0.19

### Technical Characteristics

Model	TCBT
-------	------

<https://apac.socomec.com/en/reference/TRAMES144>