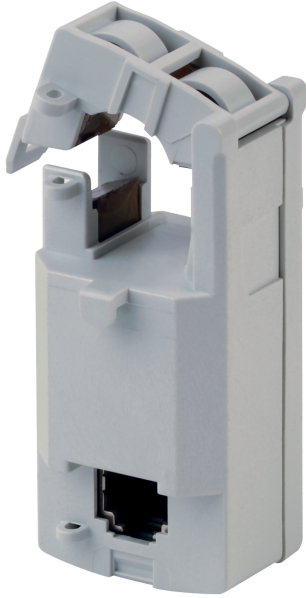


**48290656**

## Sensor iTR-14 14mm 40-160A



### Strong points

- Smart sensors
- Accurate
- VirtualMonitor technology
- AutoCorrect technology

### General characteristics

- Range from 25 to 600A.
- Used with power monitoring device DIRIS Digiware, DIRIS A-40, DIRIS B.
- PreciSense technology: global protection class in accordance with standard IEC 61557-12.
- Easy installation and configuration.

### Compliance with standards

- IEC 61557-12
- ISO 14025
- UL

### Link to the reference

<https://apac.socomec.com/en/reference/48290656>

The split-core current sensors in the iTR ranges enable the current of an electrical installation to be measured. Used with power monitoring device DIRIS Digiware, DIRIS A-40, DIRIS B, they make it possible to perform measurements between 25 and 600 A, with guaranteed accuracy. The RJ12 connection provides quick connections, and the integrated intelligence prevents any configuration errors. The sensors in the iTR range revolutionise the world of measurement and provide access to Virtual Monitor status monitoring technologies and to AutoCorrect automatic configuration.

<b>Classification</b>	
UNSPSC	83101808
ETIM Class	EC002048
IGCC	6042
<b>Commerce</b>	
Effective date	2018-01-01
Country of origin	FR
<b>ETIM - Electrical characteristics</b>	
Rated primary current [A]	160
Rated secondary current [A]	0.1
Rated secondary apparent power [VA]	0.1
Accuracy class	0.2S
Overcurrent limiting factor	FS 10
Calibrated	Yes
<b>ETIM - Mechanical characteristics</b>	
With contact protection	Yes
Height opening [mm]	14..14
Width opening [mm]	14..14
Opening diameter [mm]	14
Snap mounting	Yes
With copper rail	Yes
Secondary connection	Plug-in connection
<b>ETIM - Technical features</b>	
Model	Attachable current transformer
Number of primary inputs	1
<b>Logistics</b>	
GTIN/EAN	3596033020087
Customs number	8504312990
Price unit	PC
Weight of the packing unit	0.082
Length of the packing unit	0.03
Width of the packing unit	0.13
Depth of the packing unit	0.13
<b>Norms</b>	
Conformity to standards	IEC UL
<b>Technical Characteristics</b>	
Model	iTR
Opening	14
Rated current	160
Secondary rated current	RJ12