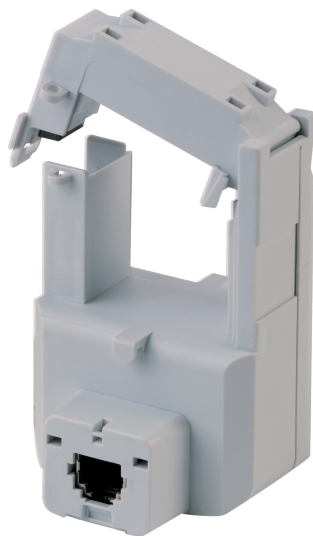


48290558

Sensor TR-32 32mm 160-600A



Strong points

- Smart sensors
- Accurate

General characteristics

- Range from 25 to 600 A.
- Used with power monitoring device DIRIS Digiware, DIRIS A-40 and DIRIS B.
- PreciSense technology: global protection class in accordance with standard IEC 61557-12.
- Easy installation and configuration.

Compliance with standards

- IEC 61557-12
- ISO 14025
- UL

Link to the reference

<https://apac.socomec.com/en/reference/48290558>

The split-core current sensors in the TR ranges enable the current of an electrical installation to be measured. Used with power monitoring device DIRIS Digiware, DIRIS A-40, DIRIS B, they make it possible to perform measurements between 25 and 600 A, with guaranteed accuracy. The RJ12 connection provides quick connections, and the integrated intelligence prevents any configuration errors.

----- System -----

Fill rate E-Order Common	29
Fill rate E-Order Selection	100

Classification

UNSPSC	83101808
ETIM Class	EC002048
IGCC	6042

Commerce

Effective date	2018-06-01
Country of origin	FR
Discount Policy	1EN30
Discount Policy Label	SENSORS

ETIM - Electrical characteristics

Rated primary current [A]	600
Rated secondary current [A]	0.1
Rated secondary apparent power [VA]	0.1
Accuracy class	0.5
Overcurrent limiting factor	FS 10
Calibrated	Yes

ETIM - Mechanical characteristics

With contact protection	Yes
Height opening [mm]	32..32
Width opening [mm]	32..32
Opening diameter [mm]	32
Snap mounting	Yes
With copper rail	Yes
Secondary connection	Plug-in connection

ETIM - Technical features

Model	Attachable current transformer
Number of primary inputs	1

Logistics

GTIN/EAN	3596033018367
Customs number	8504312990
Price unit	PC
Weight of the packing unit	0.19
Length of the packing unit	0.06
Width of the packing unit	0.06
Depth of the packing unit	0.09

Norms

Conformity to standards	IEC UL
-------------------------	------------

Technical Characteristics

Model	TR
-------	----

Opening	32
Rated current	600
Secondary rated current	RJ12