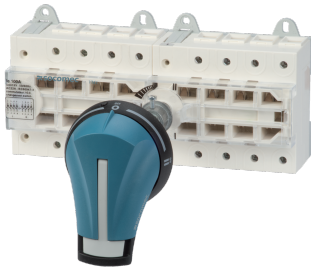


44304010

Manual operated transfer switch body SIRCO VM1 I-0-II 4P 100A



Strong points

- Safe isolation
- Modular product

General characteristics

- Range from 63A to 125A.
- Available in 3P or 4P.
- Direct handle or external handle.

Compliance with standards

- IEC 60947-3

Link to the reference

<https://apac.socomec.com/en/reference/44304010>

SIRCO VM1 are 3 or 4 pole modular manual transfer switches with visible breaking. They provide on-load transfer between two sources for any low voltage power circuit, as well as safety isolation. Other applications include source inversion (e.g. to change the direction of a motor) or grounding/earthing.

Classification

UNSPSC	39122205
ETIM Class	EC000216
IGCC	5177

Commerce

Effective date	1999-12-01
Country of origin	TN
Length of the product unit	0.1155
Width of the product unit	0.215
Depth of the product unit	0.0905
Weight	1.36

ETIM - Electrical characteristics

Max. rated operation voltage Ue AC [V]	800
Rated operating voltage [V]	400..690
Rated permanent current Iu [A]	100
Rated permanent current at AC-23, 400 V [A]	63
Rated permanent current at AC-21, 400 V [A]	100
Rated operation power at AC-23, 400 V [kW]	30
Switching power at 400 V [kW]	30
Conditioned rated short-circuit current Iq [kA]	100
Number of poles	4

ETIM - Mechanical characteristics

Suitable for floor mounting	No
Suitable for front mounting 4-hole	No
Suitable for front mounting centre	No
Suitable for distribution board installation	No
Suitable for intermediate mounting	Yes
Colour control element	Black
Degree of protection (IP), front side	IP20

ETIM - Technical features

Version as main switch	Yes
Version as maintenance-/service switch	Yes
Version as safety switch	Yes
Version as emergency stop installation	No
Version as reversing switch	Yes
Number of switches	2
Motor drive optional	No
Motor drive integrated	No
Voltage release optional	No
Device construction	Built-in device fixed built-in technique
Type of control element	Short thumb-grip
Interlockable	Yes
Type of electrical connection of main circuit	Cable clamp

Logistics

GTIN/EAN	3596031221417
Customs number	8536508090
Price unit	PC
Weight of the packing unit	1.36
Length of the packing unit	0.255
Width of the packing unit	0.12
Depth of the packing unit	0.15
Norms	
Conformity to standards	IEC
Technical Characteristics	
Control operator	Manual Direct : E1 / External : S1
Number of poles	4
Rated current	100
Frame size	VM1