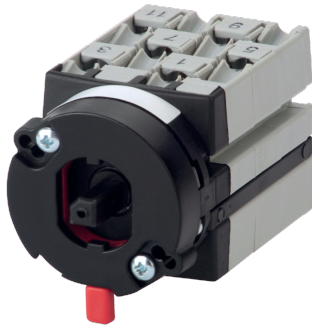


43303102

## COMO CS switch body, I-0-II function, 3P, door mounting, 25A



### Strong points

- Simple installation
- Quick mounting
- Effective in all circumstances

### General characteristics

- Range from 25A to 100A.
- Available in 3P or 4P.
- Rear mounting or door mounting.
- Available as stand-alone switches or enclosed.

### Compliance with standards

- IEC 60947-3
- UL 60947-4-1

### Link to the reference

<https://apac.socomec.com/en/reference/43303102>

They ensure switching, transfer of sources or transfer of two low voltage circuits on load as well as their safe disconnection.

### Classification

UNSPSC	39122205
ETIM Class	EC000216
IGCC	5177

### Commerce

Effective date	2018-09-18
Country of origin	DE
Length of the product unit	0.039
Width of the product unit	0.081
Depth of the product unit	0.04

### ETIM - Electrical characteristics

Max. rated operation voltage Ue AC [V]	690
Rated operating voltage [V]	400..690
Rated permanent current Iu [A]	25
Rated permanent current at AC-23, 400 V [A]	15
Rated permanent current at AC-21, 400 V [A]	25
Rated operation power at AC-3, 400 V [kW]	12
Rated operation power at AC-23, 400 V [kW]	7.5
Switching power at 400 V [kW]	7.5
Conditioned rated short-circuit current Iq [kA]	7
Number of poles	3

### ETIM - Mechanical characteristics

Suitable for floor mounting	No
Suitable for front mounting 4-hole	Yes
Suitable for front mounting centre	Yes
Suitable for distribution board installation	No
Suitable for intermediate mounting	No
Colour control element	Black
Degree of protection (IP), front side	IP20

### ETIM - Technical features

Version as main switch	Yes
Version as maintenance-/service switch	Yes
Version as safety switch	Yes
Version as emergency stop installation	No
Version as reversing switch	Yes
Number of switches	1
Motor drive optional	No
Motor drive integrated	No
Voltage release optional	No
Device construction	Built-in device fixed built-in technique
Type of control element	Short thumb-grip
Interlockable	Yes
Type of electrical connection of main circuit	Cable clamp

### Logistics

GTIN/EAN	3596033033506
----------	---------------

Customs number	8536508090
Price unit	PC
Weight of the packing unit	0.132
Length of the packing unit	0.09
Width of the packing unit	0.07
Depth of the packing unit	0.08
<b>Norms</b>	
Conformity to standards	IEC UL
<b>Technical Characteristics</b>	
Control operator	Direct / External : L
Number of poles	3
Rated current	25
Type	door mounting
Frame size	CSd