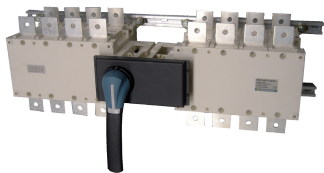


41009881

Manually operated transfer switch body SIRCOVER ATS Bypass 12+4P 1000A



Link to the reference

<https://apac.socomec.com/en/reference/41009881>

----- System -----

Fill rate E-Order Common	83
Fill rate E-Order Selection	75

Classification

UNSPSC	39122205
ETIM Class	EC000216
IGCC	5177

Commerce

Effective date	2007-07-04
Obsolescence date	2021-02-25
Production ban date	2021-02-25
Country of origin	FR
Discount Policy	1CH34
Discount Policy Label	SIRCOVER>630A
Length of the product unit	0.321
Width of the product unit	1.055
Depth of the product unit	0.344

ETIM - Electrical characteristics

Max. rated operation voltage Ue AC [V]	1000
Rated operating voltage [V]	400..690
Rated permanent current Iu [A]	1000
Number of poles	4

ETIM - Mechanical characteristics

Suitable for floor mounting	No
Suitable for front mounting 4-hole	No
Suitable for front mounting centre	No
Suitable for distribution board installation	No
Suitable for intermediate mounting	Yes
Colour control element	Black
Degree of protection (IP), front side	IP20

ETIM - Technical features

Version as main switch	Yes
Version as maintenance-/service switch	Yes
Version as safety switch	Yes
Version as emergency stop installation	No
Version as reversing switch	Yes
Number of switches	3
Motor drive optional	No
Motor drive integrated	No
Voltage release optional	No
Device construction	Built-in device fixed built-in technique
Type of control element	Door coupling rotary drive
Interlockable	Yes
Type of electrical connection of main circuit	Bolt connection

Logistics

GTIN/EAN	3596031883851
Customs number	8536508090
Price unit	PC
Weight of the packing unit	44

Norms

Conformity to standards	IEC
-------------------------	-----

Technical Characteristics

Control operator	Manual Bypass I-0-II
Number of poles	4 + 12
Rated current	1000
Type	MTSE
Frame size	B6