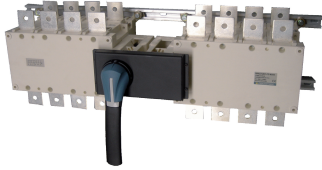


41009863

## Manually operated transfer switch body SIRCOVER ATS Bypass 12+4P 630A



SIRCOVER ATS Bypass switches are manual 12 + 4 pole transfer switches with positive break indication. They are designed to isolate ATS type electrical equipment (automatic transfer switch) or UPS, with minimum interruption to the load supply. Integrating a SOCOMEC transfer switch into the installation enables source selection when in Bypass.

### Strong points

- Stable positions
- On-load switching
- Secured breaking
- A complete solution

### General characteristics

- Range from 125A to 1600A.
- Available in 12 + 4P.
- Direct handle or external handle.

### Compliance with standards

- IEC 60947-3

### Link to the reference

<https://apac.socomec.com/en/reference/41009863>

### ----- System -----

Fill rate E-Order Common	83
Fill rate E-Order Selection	75

### Classification

UNSPSC	39122205
ETIM Class	EC000216
IGCC	5177

### Commerce

Effective date	2006-09-06
Country of origin	FR
Discount Policy	1CH32
Discount Policy Label	SIRCOVER<=630A
Length of the product unit	0.235
Width of the product unit	0.85
Depth of the product unit	0.193

### ETIM - Electrical characteristics

Max. rated operation voltage Ue AC [V]	1000
Rated operating voltage [V]	400..690
Rated permanent current Iu [A]	630
Number of poles	4

### ETIM - Mechanical characteristics

Suitable for floor mounting	No
Suitable for front mounting 4-hole	No
Suitable for front mounting centre	No
Suitable for distribution board installation	No
Suitable for intermediate mounting	Yes
Colour control element	Black
Degree of protection (IP), front side	IP20

### ETIM - Technical features

Version as main switch	Yes
Version as maintenance-/service switch	Yes
Version as safety switch	Yes
Version as emergency stop installation	No
Version as reversing switch	Yes
Number of switches	3
Motor drive optional	No
Motor drive integrated	No
Voltage release optional	No
Device construction	Built-in device fixed built-in technique
Type of control element	Door coupling rotary drive
Interlockable	Yes
Type of electrical connection of main circuit	Bolt connection

### Logistics

GTIN/EAN	3596031847358
Customs number	8536508090
Price unit	PC
Weight of the packing unit	27.5

### Norms

Conformity to standards	IEC
-------------------------	-----

### Technical Characteristics

Control operator	Manual Bypass I-0-II
Number of poles	4 + 12
Rated current	630
Type	MTSE
Frame size	B5