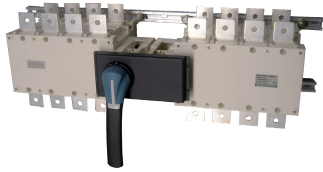


41009825

Manually operated transfer switch body SIRCOVER ATS Bypass 12+4P 250A



SIRCOVER ATS Bypass switches are manual 12 + 4 pole transfer switches with positive break indication. They are designed to isolate ATS type electrical equipment (automatic transfer switch) or UPS, with minimum interruption to the load supply. Integrating a SOCOMEC transfer switch into the installation enables source selection when in Bypass.

Strong points

- Stable positions
- On-load switching
- Secured breaking
- A complete solution

General characteristics

- Range from 125A to 1600A.
- Available in 12 + 4P.
- Direct handle or external handle.

Compliance with standards

- IEC 60947-3

Link to the reference

<https://apac.socomec.com/en/reference/41009825>

----- System -----

Fill rate E-Order Common	86
Fill rate E-Order Selection	75

Classification

UNSPSC	39122205
ETIM Class	EC000216
IGCC	5177

Commerce

Effective date	2006-09-06
Country of origin	FR
Discount Policy	1CH32
Discount Policy Label	SIRCOVER<=630A
Length of the product unit	0.16
Width of the product unit	0.725
Depth of the product unit	0.193
Weight	14.46

ETIM - Electrical characteristics

Max. rated operation voltage Ue AC [V]	800
Rated operating voltage [V]	400..690
Rated permanent current Iu [A]	250
Number of poles	4

ETIM - Mechanical characteristics

Suitable for floor mounting	No
Suitable for front mounting 4-hole	No
Suitable for front mounting centre	No
Suitable for distribution board installation	No
Suitable for intermediate mounting	Yes
Colour control element	Black
Degree of protection (IP), front side	IP20

ETIM - Technical features

Version as main switch	Yes
Version as maintenance-/service switch	Yes
Version as safety switch	Yes
Version as emergency stop installation	No
Version as reversing switch	Yes
Number of switches	3
Motor drive optional	No
Motor drive integrated	No
Voltage release optional	No
Device construction	Built-in device fixed built-in technique
Type of control element	Door coupling rotary drive
Interlockable	Yes

Type of electrical connection of main circuit	Bolt connection
Logistics	
GTIN/EAN	3596031847334
Customs number	8536508090
Price unit	PC
Weight of the packing unit	14.46
Length of the packing unit	0.1
Width of the packing unit	0.1
Depth of the packing unit	0.1
Norms	
Conformity to standards	IEC
Technical Characteristics	
Control operator	Manual Bypass I-0-II
Number of poles	4 + 12
Rated current	250
Type	MTSE
Frame size	B4