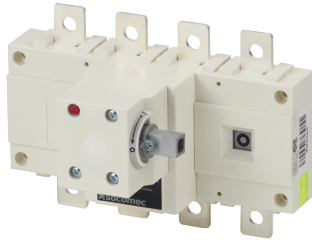


26054051

AC Load break switch SIRCO 4P 500A side operation w/o handle



Strong points

- Reliability and performance
- Safety of property and personnel
- Simplicity
- Easy to install

General characteristics

- Double positive break indication given through a position indication window, located directly on the product, and by the operating handle.
- Severe load duty categories (AC-22 and AC-23).
- High resistance to damp heat (supplied "tropicalised").

Compliance with standards

- IEC 60947-3

Link to the reference

<https://apac.socomec.com/en/reference/26054051>

SIRCO are manually or remotely operated multipolar load break switches. They make and break under load conditions and provide safe isolation. SIRCO are designed for 415 VAC and DC low voltage electrical circuits.

----- System -----

| | |
|-----------------------------|-----|
| Fill rate E-Order Common | 33 |
| Fill rate E-Order Selection | 100 |

Classification

| | |
|------------|----------|
| UNSPSC | 39122233 |
| ETIM Class | EC000216 |
| IGCC | 5290 |

Commerce

| | |
|-----------------------|------------|
| Effective date | 2006-06-09 |
| Country of origin | FR |
| Discount Policy | 1CA32 |
| Discount Policy Label | SIRCO<=630 |

ETIM - Electrical characteristics

| | |
|---|----------|
| Max. rated operation voltage Ue AC [V] | 500 |
| Rated operating voltage [V] | 400..500 |
| Rated permanent current Iu [A] | 500 |
| Rated permanent current at AC-23, 400 V [A] | 500 |
| Rated permanent current at AC-21, 400 V [A] | 500 |
| Rated short-time withstand current Icw [kA] | 13 |
| Rated operation power at AC-23, 400 V [kW] | 295 |
| Switching power at 400 V [kW] | 295 |
| Conditioned rated short-circuit current Iq [kA] | 70 |
| Number of poles | 4 |

ETIM - Mechanical characteristics

| | |
|--|-------|
| Suitable for floor mounting | No |
| Suitable for front mounting 4-hole | No |
| Suitable for front mounting centre | No |
| Suitable for distribution board installation | No |
| Suitable for intermediate mounting | Yes |
| Colour control element | Other |
| Degree of protection (IP), front side | IP20 |

ETIM - Technical features

| | |
|--|--|
| Version as main switch | Yes |
| Version as maintenance-/service switch | Yes |
| Version as safety switch | Yes |
| Version as emergency stop installation | Yes |
| Version as reversing switch | No |
| Number of switches | 1 |
| Motor drive optional | No |
| Motor drive integrated | No |
| Voltage release optional | No |
| Device construction | Built-in device fixed built-in technique |
| Type of control element | Other |
| Interlockable | Yes |

| | |
|---|---------------------------------|
| Type of electrical connection of main circuit | Bolt connection |
| Logistics | |
| GTIN/EAN | 3596031834204 |
| Customs number | 8536508090 |
| Price unit | PC |
| Weight of the packing unit | 5.693 |
| Length of the packing unit | 0.29 |
| Width of the packing unit | 0.29 |
| Depth of the packing unit | 0.38 |
| Norms | |
| Conformity to standards | CCC IEC |
| Technical Characteristics | |
| Control operator | Direct : B2, J1 / External : S2 |
| Number of poles | 4 |
| Rated voltage | 415 VAC / 500 VDC |
| Rated current | 500 |
| Type | Side Operation |
| Frame size | B5 |