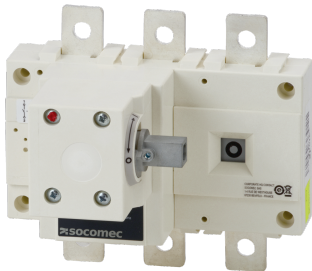


26054050

AC Load break switch SIRCO 4P 500A side operation w/o handle



Link to the reference

<https://apac.socomec.com/en/reference/26054050>

----- System -----

Fill rate E-Order Common	33
Fill rate E-Order Selection	100
<b>Classification</b>	
UNSPSC	39122233
ETIM Class	EC000216
IGCC	5290
<b>Commerce</b>	
Effective date	1988-04-15
Obsolescence date	2021-07-01
Production ban date	2021-12-31
Country of origin	FR
Discount Policy	1CA32
Discount Policy Label	SIRCO up to 630
<b>ETIM - Electrical characteristics</b>	
Max. rated operation voltage Ue AC [V]	500
Rated operating voltage [V]	400..500
Rated permanent current Iu [A]	500
Rated permanent current at AC-23, 400 V [A]	500
Rated permanent current at AC-21, 400 V [A]	500
Rated short-time withstand current Icw [kA]	13
Rated operation power at AC-23, 400 V [kW]	295
Switching power at 400 V [kW]	295
Conditioned rated short-circuit current Iq [kA]	70
Number of poles	4
<b>ETIM - Mechanical characteristics</b>	
Suitable for floor mounting	No
Suitable for front mounting 4-hole	No

Suitable for front mounting centre	No
Suitable for distribution board installation	No
Suitable for intermediate mounting	Yes
Colour control element	Other
Degree of protection (IP), front side	IP20
<b>ETIM - Technical features</b>	
Version as main switch	Yes
Version as maintenance-/service switch	Yes
Version as safety switch	Yes
Version as emergency stop installation	Yes
Version as reversing switch	No
Number of switches	1
Motor drive optional	No
Motor drive integrated	No
Voltage release optional	No
Device construction	Built-in device fixed built-in technique
Type of control element	Other
Interlockable	Yes
Type of electrical connection of main circuit	Bolt connection
<b>Logistics</b>	
GTIN/EAN	3596031121946
Customs number	8536508090
Price unit	PC
Weight of the packing unit	6.4
Length of the packing unit	0.1
Width of the packing unit	0.1
Depth of the packing unit	0.1
<b>Norms</b>	
Conformity to standards	IEC
<b>Technical Characteristics</b>	
Control operator	Direct : B2, J1 / External : S2
Number of poles	4
Rated voltage	415 VAC / 500 VDC
Rated current	500
Type	Side Operation
Frame size	B5