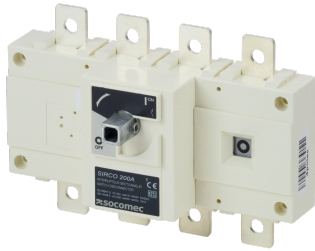


26054026

## AC Load break switch SIRCO 4P 250A side operation w/o handle



### Strong points

- Reliability and performance
- Safety of property and personnel
- Simplicity
- Easy to install

### General characteristics

- Double positive break indication given through a position indication window, located directly on the product, and by the operating handle.
- Severe load duty categories (AC-22 and AC-23).
- High resistance to damp heat (supplied "tropicalised").

### Compliance with standards

- IEC 60947-3

### Link to the reference

<https://apac.socomec.com/en/reference/26054026>

SIRCO are manually or remotely operated multipolar load break switches. They make and break under load conditions and provide safe isolation. SIRCO are designed for 415 VAC and DC low voltage electrical circuits.

### ----- System -----

Fill rate E-Order Common	33
Fill rate E-Order Selection	100

### Classification

UNSPSC	39122233
ETIM Class	EC000216
IGCC	5290

### Commerce

Effective date	2006-06-09
Country of origin	FR
Discount Policy	1CA32
Discount Policy Label	SIRCO<=630

### ETIM - Electrical characteristics

Max. rated operation voltage Ue AC [V]	500
Rated operating voltage [V]	400..500
Rated permanent current Iu [A]	250
Rated permanent current at AC-23, 400 V [A]	250
Rated permanent current at AC-21, 400 V [A]	250
Rated short-time withstand current Icw [kA]	9
Rated operation power at AC-23, 400 V [kW]	140
Switching power at 400 V [kW]	140
Conditioned rated short-circuit current Iq [kA]	50
Number of poles	4

### ETIM - Mechanical characteristics

Suitable for floor mounting	No
Suitable for front mounting 4-hole	No
Suitable for front mounting centre	No
Suitable for distribution board installation	No
Suitable for intermediate mounting	Yes
Colour control element	Other
Degree of protection (IP), front side	IP20

### ETIM - Technical features

Version as main switch	Yes
Version as maintenance-/service switch	Yes
Version as safety switch	Yes
Version as emergency stop installation	Yes
Version as reversing switch	No
Number of switches	1
Motor drive optional	No
Motor drive integrated	No
Voltage release optional	No
Device construction	Built-in device fixed built-in technique
Type of control element	Other
Interlockable	Yes

Type of electrical connection of main circuit	Bolt connection
<b>Logistics</b>	
GTIN/EAN	3596031833979
Customs number	8536508090
Price unit	PC
Weight of the packing unit	2.57
Length of the packing unit	0.217
Width of the packing unit	0.175
Depth of the packing unit	0.298
<b>Norms</b>	
Conformity to standards	CCC IEC
<b>Technical Characteristics</b>	
Control operator	Direct : B2, J1 / External : S2
Number of poles	4
Rated voltage	415 VAC / 500 VDC
Rated current	250
Type	Side Operation
Frame size	B4