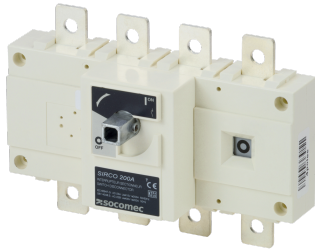


26004021

AC Load break switch SIRCO 4P 200A front operation w/o handle



Strong points

- Reliability and performance
- Safety of property and personnel
- Simplicity
- Easy to install

General characteristics

- Double positive break indication given through a position indication window, located directly on the product, and by the operating handle.
- Severe load duty categories (AC-22 and AC-23).
- High resistance to damp heat (supplied "tropicalised").

Compliance with standards

- IEC 60947-3

Link to the reference

<https://apac.socomec.com/en/reference/26004021>

SIRCO are manually or remotely operated multipolar load break switches. They make and break under load conditions and provide safe isolation. SIRCO are designed for 415 VAC and DC low voltage electrical circuits.

Classification

UNSPSC	39122233
ETIM Class	EC000216
IGCC	5290

Commerce

Effective date	1993-04-14
Country of origin	TN
Length of the product unit	0.16
Width of the product unit	0.23
Depth of the product unit	0.075
Weight	2.12

ETIM - Electrical characteristics

Max. rated operation voltage Ue AC [V]	500
Rated operating voltage [V]	400..500
Rated permanent current Iu [A]	200
Rated permanent current at AC-23, 400 V [A]	200
Rated permanent current at AC-21, 400 V [A]	200
Rated short-time withstand current Icw [kA]	9
Rated operation power at AC-23, 400 V [kW]	110
Switching power at 400 V [kW]	110
Conditioned rated short-circuit current Iq [kA]	80
Number of poles	4

ETIM - Mechanical characteristics

Suitable for floor mounting	No
Suitable for front mounting 4-hole	No
Suitable for front mounting centre	No
Suitable for distribution board installation	No
Suitable for intermediate mounting	Yes
Colour control element	Other
Degree of protection (IP), front side	IP20

ETIM - Technical features

Version as main switch	Yes
Version as maintenance-/service switch	Yes
Version as safety switch	Yes
Version as emergency stop installation	Yes
Version as reversing switch	No
Number of switches	1
Motor drive optional	No
Motor drive integrated	No
Voltage release optional	No
Device construction	Built-in device fixed built-in technique
Type of control element	Other
Interlockable	Yes
Type of electrical connection of main circuit	Bolt connection

Logistics

GTIN/EAN	3596031118731
Customs number	8536508090
Price unit	PC
Weight of the packing unit	2.12
Length of the packing unit	0.235
Width of the packing unit	0.11
Depth of the packing unit	0.175

Norms

Conformity to standards	IEC
-------------------------	-----

Technical Characteristics

Control operator	Direct : B2, J1 / External : S2
Number of poles	4
Rated voltage	415 VAC / 500 VDC
Rated current	200
Type	Front Operation
Frame size	B4a