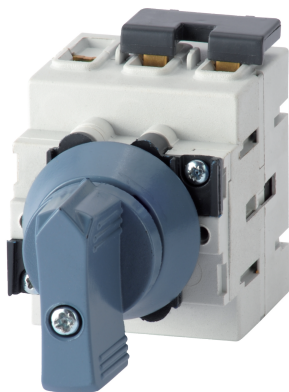


21PV4144

Load break switch body for photovoltaic applications SIRCO MC PV 600VDC 4P 45A



Strong points

- Compact
- High breaking capacity up to 1000 VDC
- Safety
- Easy mounting

General characteristics

- Range from 25A to 40A.
- Up to 1000 VDC.
- Din-rail mounting or door mounted.

Compliance with standards

- IEC 60947-3
- UL508i

Link to the reference

<https://apac.socomec.com/en/reference/21PV4144>

SIRCO MC PV are DC load break switches. They make and break under load conditions and provide optimum safety isolation for any PV circuit.

----- System -----	
Fill rate E-Order Common	100
Fill rate E-Order Selection	78
Classification	
UNSPSC	39122233
ETIM Class	EC000216
IGCC	5290
Commerce	
Effective date	2013-11-26
Country of origin	PL
Discount Policy	1CD20
Discount Policy Label	INTER PV IEC
Length of the product unit	0.065
Width of the product unit	0.097
Depth of the product unit	0.064
Weight	0.25
ETIM - Electrical characteristics	
Max. rated operation voltage Ue AC [V]	1000
Rated operating voltage [V]	600..600
Rated permanent current Iu [A]	45
Number of poles	4
ETIM - Mechanical characteristics	
Suitable for floor mounting	No
Suitable for front mounting 4-hole	Yes
Suitable for front mounting centre	No
Suitable for distribution board installation	Yes
Suitable for intermediate mounting	Yes
Colour control element	Other
Degree of protection (IP), front side	IP20
ETIM - Technical features	
Version as main switch	Yes
Version as maintenance-/service switch	Yes
Version as safety switch	Yes
Version as emergency stop installation	Yes
Version as reversing switch	No
Number of switches	1
Motor drive optional	No
Motor drive integrated	No
Voltage release optional	No
Device construction	Built-in device fixed built-in technique
Type of control element	Other
Interlockable	Yes
Type of electrical connection of main circuit	Screw connection
Logistics	

GTIN/EAN	3596032776916
Customs number	8536508090
Price unit	PC
Weight of the packing unit	0.25
Length of the packing unit	0.095
Width of the packing unit	0.095
Depth of the packing unit	0.12
Norms	
Conformity to standards	IEC UL
Technical Characteristics	
Control operator	Manual
Number of poles	4
Rated voltage	600
Rated current	45
Type	Frontal operation
Frame size	MC