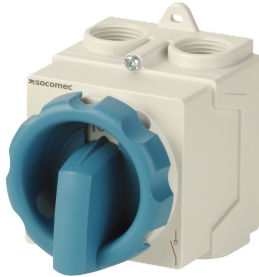


21153301

Load break switch COMO 3P 20A enclosed grey/blue handle



Strong points

- Safe operation
- Suitable for all kinds of environment
- Easy installation
- Range

General characteristics

- From 20 to 125 A.
- 3, 4, 6, 8 poles.
- Yellow/red or grey/blue version.
- Triple lock in OFF position.
- Polycarbonate enclosure.
- Screw-on front.
- Degree of protection: IP65.
- Cable gland knockouts at top, bottom and sides.
- Switch centring system for easy closing.
- Door interlocking when switch is ON.

Compliance with standards

- IEC 60947-3

Link to the reference

<https://apac.socomec.com/en/reference/21153301>

Enclosed load break switches ensure the on-load breaking and making of circuits and safely isolate all low-voltage electrical circuits by providing protection against contact with live parts and environmental elements, such as dust, water and other hazards.

They enable the shutdown and lock out of the power supply as close to the equipment as possible.

====- System -====

Fill rate E-Order Common	86
Fill rate E-Order Selection	100

Classification

UNSPSC	39122205
ETIM Class	EC000216
IGCC	5176

Commerce

Effective date	2017-01-16
Country of origin	DE
Discount Policy	1CM20
Discount Policy Label	ENCLOSED LBS
Length of the product unit	0.092
Width of the product unit	0.064
Depth of the product unit	0.083
Weight	0.15

ETIM - Electrical characteristics

Max. rated operation voltage Ue AC [V]	690
Rated operating voltage [V]	400..690
Rated permanent current Iu [A]	20
Rated permanent current at AC-23, 400 V [A]	15
Rated permanent current at AC-21, 400 V [A]	20
Rated operation power at AC-3, 400 V [kW]	20
Rated short-time withstand current Icw [kA]	0.34
Rated operation power at AC-23, 400 V [kW]	7.5
Switching power at 400 V [kW]	7.5
Conditioned rated short-circuit current Iq [kA]	8
Number of poles	3

ETIM - Mechanical characteristics

Suitable for floor mounting	Yes
Suitable for front mounting 4-hole	No
Suitable for front mounting centre	No
Suitable for distribution board installation	No
Suitable for intermediate mounting	No
Colour control element	Black
Degree of protection (IP), front side	IP65

ETIM - Technical features

Version as main switch	No
Version as maintenance-/service switch	Yes
Version as safety switch	Yes
Version as emergency stop installation	Yes
Version as reversing switch	No

Number of switches	1
Motor drive optional	No
Motor drive integrated	No
Voltage release optional	No
Device construction	Complete device in housing
Type of control element	Door coupling rotary drive
Interlockable	Yes
Type of electrical connection of main circuit	Screw connection

Logistics

GTIN/EAN	3596033000409
Customs number	8537109899
Price unit	PC
Weight of the packing unit	0.15
Length of the packing unit	0.18
Width of the packing unit	0.1
Depth of the packing unit	0.35

Norms

Conformity to standards	IEC
-------------------------	-----

Technical Characteristics

Control operator	Grey / blue handle
Number of poles	3
Rated current	20
Type	Rotary