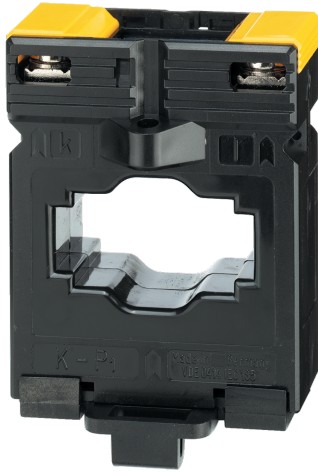


**192U4030**

**Bar or cable-through CT T2CB 32-40 300/5A 5VA class 0,2**



#### Strong points

- Compatible accuracy class
- Wide range of ratings and dimensions
- Quick and easy to install

#### General characteristics

- Accuracy class: 0.2s - 0.5 or 1.
- Dielectric quality: 3 kV - 50 Hz - 1 min.
- Operating frequency: 50 to 60 Hz.
- Permanent overload: 1.2 In.
- Insulation class: E (120°C).

#### Compliance with standards

- IEC 61869-2
- IEC 61439-1

#### Link to the reference

<https://apac.socomec.com/en/reference/>

[192U4030](#)

Current transformers deliver to the secondary a standard current proportional to the primary current and adapted to the rating of the associated device. They are equipped as standard with removable terminal covers and double terminals allowing the secondary to be short-circuited without any risk.

They are mounted using two screw-on metal brackets or, in certain cases, by a clip-on DINrail fastener. The connections are made by screws or by fast-on terminals.

<b>Classification</b>	
UNSPSC	39121032
ETIM Class	EC002048
IGCC	4186
<b>Commerce</b>	
Effective date	2002-04-24
Country of origin	DE
<b>ETIM - Electrical characteristics</b>	
Rated primary current [A]	300
Rated secondary current [A]	5
Rated secondary apparent power [VA]	5
Accuracy class	0.2S
Overcurrent limiting factor	FS 5
Calibrated	Yes
<b>ETIM - Mechanical characteristics</b>	
With contact protection	No
Height opening [mm]	40..40
Width opening [mm]	40..40
Opening diameter [mm]	32
Snap mounting	Yes
With copper rail	Yes
Secondary connection	Screw connection
<b>ETIM - Technical features</b>	
Model	Through-feed current converter
Number of primary inputs	1
<b>Logistics</b>	
GTIN/EAN	3596031620326
Customs number	8504318090
Price unit	PC
Weight of the packing unit	0.42
<b>Norms</b>	
Conformity to standards	IEC
<b>Technical Characteristics</b>	
Model	T2CB 32-40
Opening	40x10 - Diam.32
Rated current	300
Secondary rated current	5