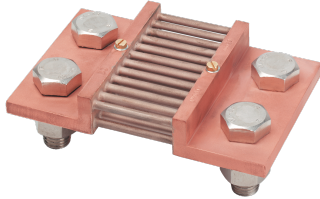


192S2255

Measurement shunt 100mV 100mV 1000A class 0,5



General characteristics

- 20 ratings from 1 to 4000 A, at 100 mV.
- Other ratings and secondary voltages available: please contact us.
- Voltage drop: 100 mV for nominal rating.
- Accuracy class: 0.5.
- Permanent overload: 1.2 In.
- 10 In/5s rating ? 500 A 5 In/5s rating 600 to 1500 A 2 In/5s rating ? 2500 A.

[Link to the reference](#)

Shunts provide indirect measurement of direct current by creating a standardised voltage drop.

Classification

UNSPSC	39121032
ETIM Class	EC002303
IGCC	4186

Commerce

Effective date	1998-02-09
Country of origin	ES

ETIM - Electrical characteristics

Primary current [A]	1000
Secondary voltage [mV]	100

Logistics

GTIN/EAN	3596031089628
Customs number	9030337000
Price unit	PC
Weight of the packing unit	1.61
Length of the packing unit	0.071
Width of the packing unit	0.069
Depth of the packing unit	0.185

Technical Characteristics

Rated voltage	100 mV
Rated current	1000

<https://apac.socomec.com/en/reference/192S2255>