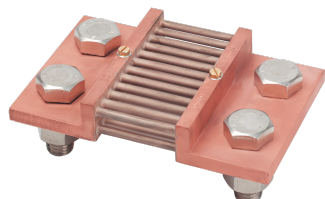


**192S2235**

## Measurement shunt 100mV 100mV 250A class 0,5



### General characteristics

- 20 ratings from 1 to 4000 A, at 100 mV.
- Other ratings and secondary voltages available: please contact us.
- Voltage drop: 100 mV for nominal rating.
- Accuracy class: 0.5.
- Permanent overload: 1.2 In.
- 10 In/5s rating ? 500 A 5 In/5s rating 600 to 1500 A 2 In/5s rating ? 2500 A.

[Link to the reference](#)

Shunts provide indirect measurement of direct current by creating a standardised voltage drop.

### Classification

UNSPSC	39121032
ETIM Class	EC002303
IGCC	4186

### Commerce

Effective date	1998-02-09
Country of origin	ES

### ETIM - Electrical characteristics

Primary current [A]	250
Secondary voltage [mV]	100

### Logistics

GTIN/EAN	3596031089598
Customs number	9030337000
Price unit	PC
Weight of the packing unit	0.572
Length of the packing unit	0.07
Width of the packing unit	0.07
Depth of the packing unit	0.18

### Technical Characteristics

Rated voltage	100 mV
Rated current	250

<https://apac.socomec.com/en/reference/192S2235>